

USER'S MANUAL

Wireless PC Camera



Please read the manual carefully before using. Keep it for special need.

Index

| | |
|------------------------|----|
| Foreword | 3 |
| Introduction..... | 3 |
| Matching kits | 4 |
| Product features..... | 4 |
| Product structure..... | 5 |
| Installation..... | 6 |
| Code matching..... | 7 |
| Browsing..... | 8 |
| Online chatting | 9 |
| Charging | 11 |
| Parameters | 11 |



NO DISCARDING, RECYCLING



Foreword

Thanks for buying our wireless webcam. It's delicately designed with high technology, which can be used in family, office and other common public places. Wireless design makes you can capture and monitor at any angle, any position.

You can find the detailed using process in this manual, including parameters, note issues and so on. Please keep it well for special need.

Introduction

With the developing of wireless technology, related products launched fast. Our wireless webcam combines the video compression with wireless transmission technology. It's the first wireless webcam with wireless digital transmission, digital video and audio compression technology and USB charging function.



Matching kits

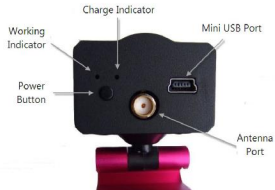
- 1 Wireless webcam
- 1 Wireless receiver
- 1 USB adapter
- 1 Standard Mini USB cable
- 1 CD (with manual in)



Product features

- * Cute metal case, beautiful design.
- * Multi-used clip, compatible with both desktop and laptop computer.
- * Using good quality lens, performance is better.
- * Resolution: VGA (640×480) 10 frames/second.
- * Transmission range:100 meters (open space).
- * Built-in high volume Li-ion battery, support 2 hours working after full charging.
- * Standard Mini USB port.
- * One button controlling, easy to use.

Product structure



Installation

Taking Windows XP® as example to show as bellow:

1. Press the power button 2 seconds, indicator light will be blue.



2. Plug wireless receiver into your computer, your computer will find a new device, wait for a minute, the driver will be installed and identified automatically, then you can find a **USB video device** in management list.

Code matching

Code matching is the process that receiver matches with webcam. Your receiver is the only way to use the wireless webcam. You can keep it be uses by others.

This process has been done by us. You don't need to operate this process.

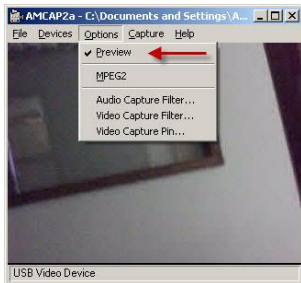
But please note, under the status of webcam being on, press it shortly accidentally, it will start to code matching and the transferring will be stopped, you should wait for about 8 seconds, then it will return to normal transmission.

Browsing

Method 1. Click "My computer" twice, then click "USB Video Device" twice.
Now you can browse the video.

Method 2. Copy the "AMCAP.EXE" in the CD to your computer, then open it.

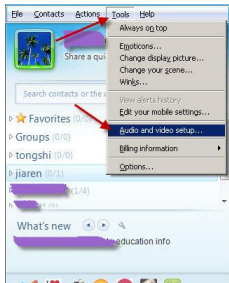
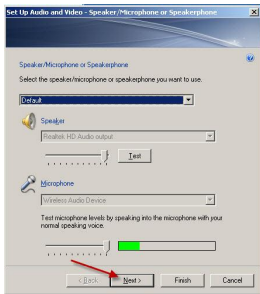
NOTE: Under VISTA® OS, Only using AMCAP can browsing!



Online chatting

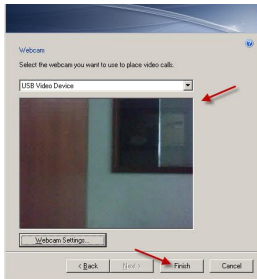
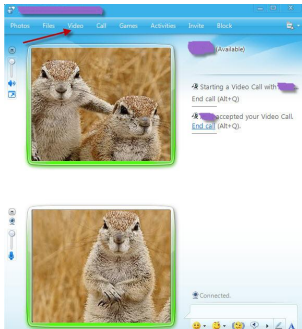
Take chatting with MSN for example :

Login your msn account, then click
Tool-Audio and video setup to set video and
audio.



Check the input and output of audio,
if normal, click "next".

Then check the video, if normal,
click "finish" to accomplish.



Open a dialogue with your
friend, click "video" to start chatting
with wireless webcam.

Charging

The webcam is built-in Li-ion battery, after full charging, it can support 5 hours working. When the power is not enough, the webcam will be off automatically. At this moment, please connect your webcam with your computer or adapter by Mini USB cable to charge, the indicator light will keep red, when it's full, the indicator light will be off automatically.

Parameters

| | |
|-----------------------|------------------------------|
| Resolution: | VGA (640X480) |
| View angle: | 70° |
| Minimum Illumination: | 3Lux |
| Focus: | 5CM-∞ |
| Transmission range : | 100Meters (Open space) |
| Battery capacity: | 350mAH |
| Consumption current: | 3.3V/170mA |
| Operation systems: | Windows® XP® SP2/VISTA®/WIN7 |
| Weight: | Webcam 80g Receiver 8g |
| Size: | 7.8 × 3.6 × 8.0 (CM) |

*Specifications are subject to minor change with upgrade and update. Please base on real object.